

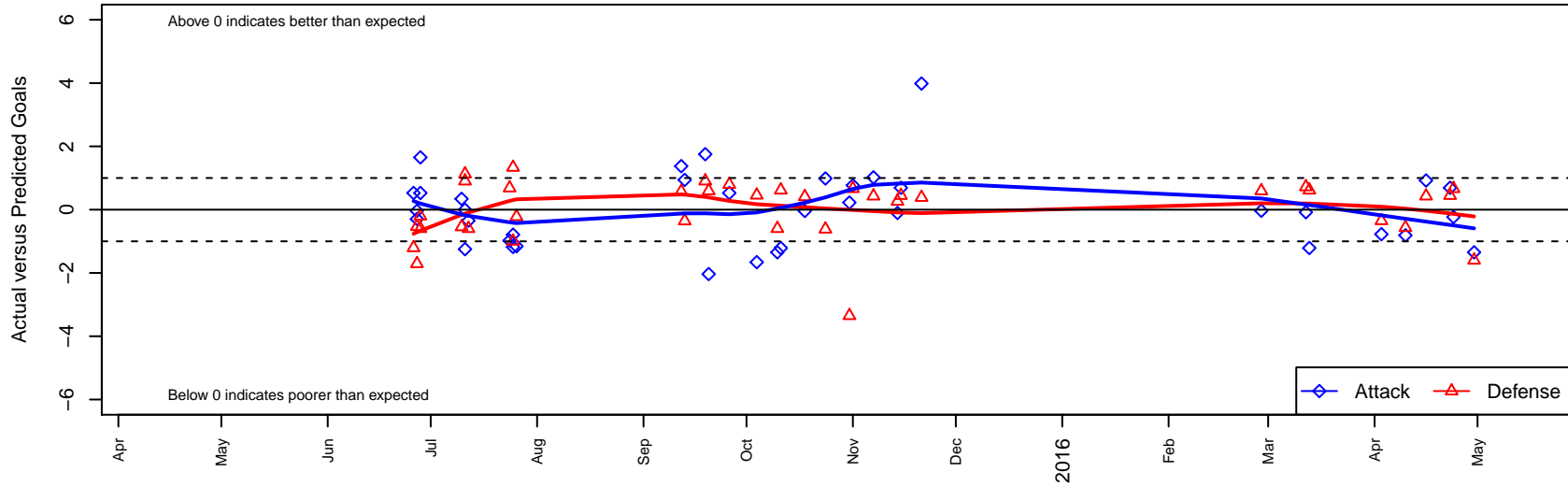
# PCU Red G01

Portland City United SC  
 Portland, OR  
 G01 total strength=1221  
 attack=3.57 defense=5.17  
 fall league = PTT G01 Div 1 Red  
 spr league = Spr OYS G01 Div 1 Red

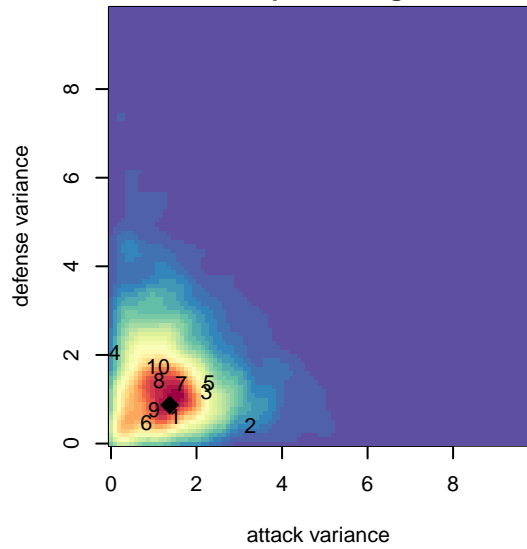
alt names used:  
 PCU Red G01  
 PCU 01G Red

Venues played:  
 2015 Clash At the Border Silver/Bronze U14  
 2015 PCU Summer Classic U14 Gold  
 2015 Crossfire Select GU14 Gold  
 2015 PTT G01 Division 1 Red  
 2015 OYS Presidents Cup G01  
 2015 Spr OYS G01 Division 1 Red

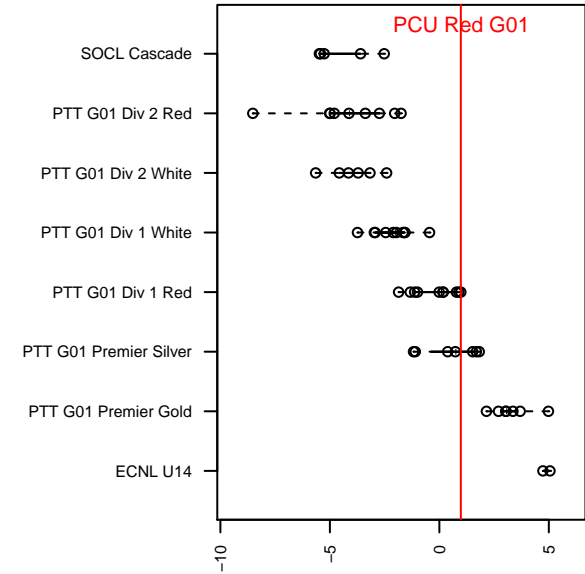
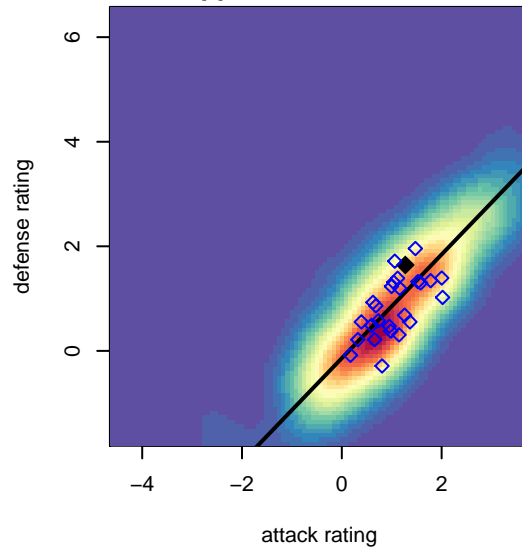
**PCU Red G01**  
 Dots are actual minus expected GF (blue circles) and GA (red triangles).  
 Blue line is smoothed change in attack strength. Red is smoothed change in defense strength.



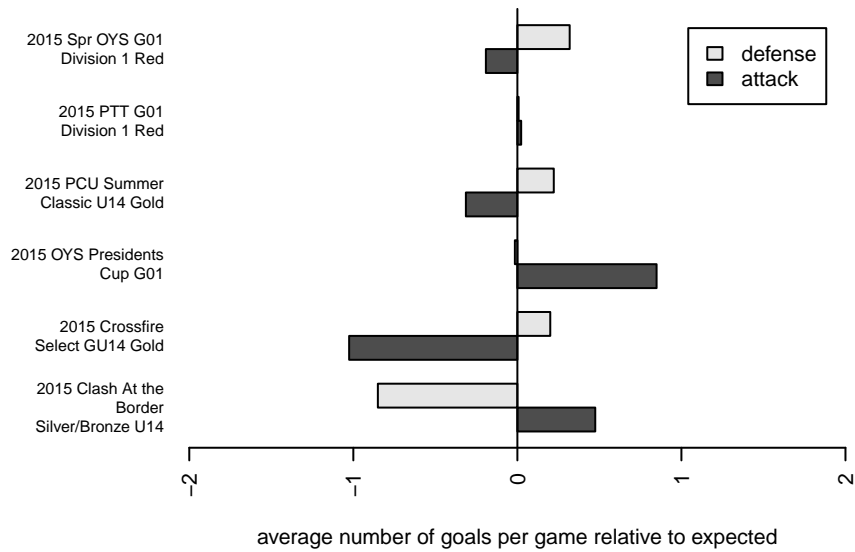
**attack and defense variance (black dot)  
relative to other teams  
and top 10 in region**



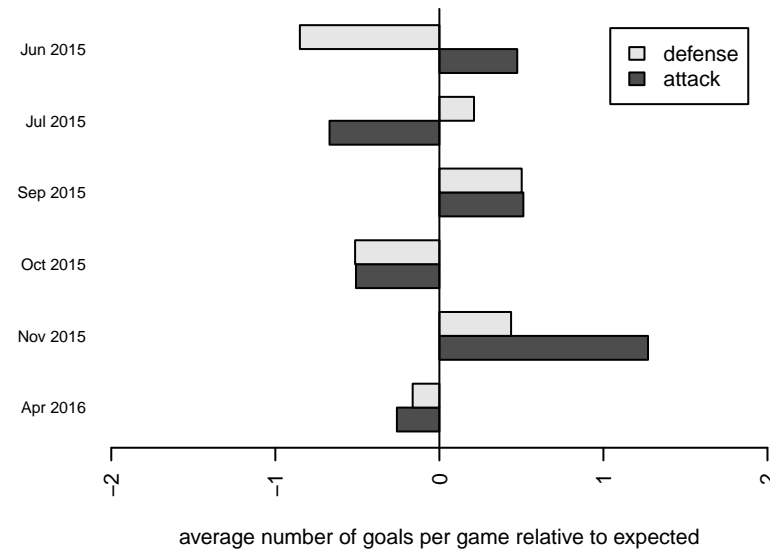
**attack and defense rating  
relative to others at age  
and all opponents in last 13 months**



**Performance relative to 13 month average**



**Performance relative to 13 month average**



| date       | home                               |   | away                              |   | venue                           | pred.home | pred.away |
|------------|------------------------------------|---|-----------------------------------|---|---------------------------------|-----------|-----------|
| 2016-04-30 | PCU Red G01                        | 0 | Pacific FC White Ice G01          | 3 | 2015 OYS Presidents Cup G01     | 1.35      | 1.40      |
| 2016-04-24 | PCU Red G01                        | 1 | BSC Portland Black-Legends G01    | 0 | 2015 Spr OYS G01 Division 1 Red | 1.23      | 0.66      |
| 2016-04-23 | PCU Red G01                        | 2 | Washington Timbers Forest G01     | 0 | 2015 Spr OYS G01 Division 1 Red | 1.31      | 0.45      |
| 2016-04-16 | ETFC Cypress Red G01               | 0 | PCU Red G01                       | 3 | 2015 Spr OYS G01 Division 1 Red | 0.43      | 2.08      |
| 2016-04-10 | HSC Galaxy G01                     | 1 | PCU Red G01                       | 2 | 2015 Spr OYS G01 Division 1 Red | 0.43      | 2.81      |
| 2016-04-03 | Crossfire OR WUSC Levante Navy G01 | 1 | PCU Red G01                       | 0 | 2015 Spr OYS G01 Division 1 Red | 0.65      | 0.78      |
| 2016-03-13 | Capital FC Timbers Black G01       | 0 | PCU Red G01                       | 0 | 2015 Spr OYS G01 Division 1 Red | 0.62      | 1.21      |
| 2016-03-12 | PCU Red G01                        | 2 | Canby United Volts G01            | 0 | 2015 Spr OYS G01 Division 1 Red | 2.08      | 0.72      |
| 2016-02-28 | PCU Red G01                        | 2 | FC Salmon Creek Nemesis White G01 | 0 | 2015 Spr OYS G01 Division 1 Red | 2.04      | 0.59      |
| 2015-11-21 | PCU Red G01                        | 6 | FC Portland White G01             | 0 | 2015 OYS Presidents Cup G01     | 2.02      | 0.38      |
| 2015-11-15 | PCU Red G01                        | 2 | Washington Timbers Forest G01     | 0 | 2015 OYS Presidents Cup G01     | 1.31      | 0.45      |
| 2015-11-14 | Cascade Rush Revolution G01        | 0 | PCU Red G01                       | 4 | 2015 OYS Presidents Cup G01     | 0.26      | 4.10      |
| 2015-11-07 | PCU Red G01                        | 4 | FC Columbia County G01            | 0 | 2015 OYS Presidents Cup G01     | 2.98      | 0.43      |
| 2015-11-01 | PCU Red G01                        | 2 | BSC Portland Black-Legends G01    | 0 | 2015 PTT G01 Division 1 Red     | 1.23      | 0.66      |
| 2015-10-31 | Crossfire OR WUSC Levante Navy G01 | 4 | PCU Red G01                       | 1 | 2015 PTT G01 Division 1 Red     | 0.65      | 0.78      |
| 2015-10-24 | PCU Red G01                        | 3 | FC Portland White G01             | 1 | 2015 PTT G01 Division 1 Red     | 2.02      | 0.38      |
| 2015-10-18 | PCU Red G01                        | 2 | Thelo Threat G01                  | 0 | 2015 PTT G01 Division 1 Red     | 2.04      | 0.41      |
| 2015-10-11 | PCU Red G01                        | 0 | Capital FC Timbers Black G01      | 0 | 2015 PTT G01 Division 1 Red     | 1.21      | 0.62      |
| 2015-10-10 | Pacific FC White Ice G01           | 2 | PCU Red G01                       | 0 | 2015 PTT G01 Division 1 Red     | 1.40      | 1.35      |
| 2015-10-04 | Crossfire OR SSC Storm G01         | 0 | PCU Red G01                       | 0 | 2015 PTT G01 Division 1 Red     | 0.46      | 1.66      |
| 2015-09-26 | Washington Timbers Green G01       | 0 | PCU Red G01                       | 1 | 2015 PTT G01 Division 1 Red     | 0.79      | 0.47      |
| 2015-09-20 | FC Salmon Creek Nemesis White G01  | 0 | PCU Red G01                       | 0 | 2015 PTT G01 Division 1 Red     | 0.59      | 2.04      |
| 2015-09-19 | PCU Red G01                        | 3 | NEU Barcelona White G01           | 0 | 2015 PTT G01 Division 1 Red     | 1.25      | 0.90      |
| 2015-09-13 | Westside Timbers Copa G01          | 1 | PCU Red G01                       | 2 | 2015 PTT G01 Division 1 Red     | 0.64      | 1.06      |
| 2015-09-12 | PCU Red G01                        | 4 | PCU SESC Dynamite G01             | 0 | 2015 PTT G01 Division 1 Red     | 2.62      | 0.57      |
| 2015-07-26 | FC Edmonds Elite G01               | 1 | PCU Red G01                       | 1 | 2015 Crossfire Select GU14 Gold | 0.78      | 2.16      |
| 2015-07-25 | PCU Red G01                        | 0 | TC United Navy G01                | 0 | 2015 Crossfire Select GU14 Gold | 0.79      | 1.34      |
| 2015-07-25 | PCU Red G01                        | 0 | Crossfire Select Granston G01     | 2 | 2015 Crossfire Select GU14 Gold | 1.18      | 1.00      |

| <b>date</b> | <b>home</b>                  |   | <b>away</b>                |   | <b>venue</b>                             | <b>pred.home</b> | <b>pred.away</b> |
|-------------|------------------------------|---|----------------------------|---|--|------------------|------------------|
| 2015-07-24  | RSA Elite Heather G01        | 0 | PCU Red G01                | 0 | 2015 Crossfire Select GU14 Gold          | 0.68             | 0.98             |
| 2015-07-12  | Pacific FC White Ice G01     | 2 | PCU Red G01                | 1 | 2015 PCU Summer Classic U14 Gold         | 1.40             | 1.35             |
| 2015-07-11  | PCU Red G01                  | 0 | NEU Barcelona White G01    | 0 | 2015 PCU Summer Classic U14 Gold         | 1.25             | 0.90             |
| 2015-07-11  | PCU Red G01                  | 1 | Highline Premier Blue G01  | 0 | 2015 PCU Summer Classic U14 Gold         | 1.00             | 1.13             |
| 2015-07-10  | Crossfire OR SSC Storm G01   | 1 | PCU Red G01                | 2 | 2015 PCU Summer Classic U14 Gold         | 0.46             | 1.66             |
| 2015-06-28  | Pacific FC White Ice G01     | 2 | PCU Red G01                | 3 | 2015 Clash At the Border Silver/Bronze U | 1.40             | 1.35             |
| 2015-06-28  | Washington Timbers Green G01 | 1 | PCU Red G01                | 1 | 2015 Clash At the Border Silver/Bronze U | 0.79             | 0.47             |
| 2015-06-27  | PCU Red G01                  | 4 | Pacific FC Force G01       | 1 | 2015 Clash At the Border Silver/Bronze U | 4.30             | 0.46             |
| 2015-06-27  | PCU Red G01                  | 3 | Eastside Timbers Black G01 | 2 | 2015 Clash At the Border Silver/Bronze U | 3.04             | 0.29             |
| 2015-06-26  | Washington Timbers Green G01 | 2 | PCU Red G01                | 1 | 2015 Clash At the Border Silver/Bronze U | 0.79             | 0.47             |